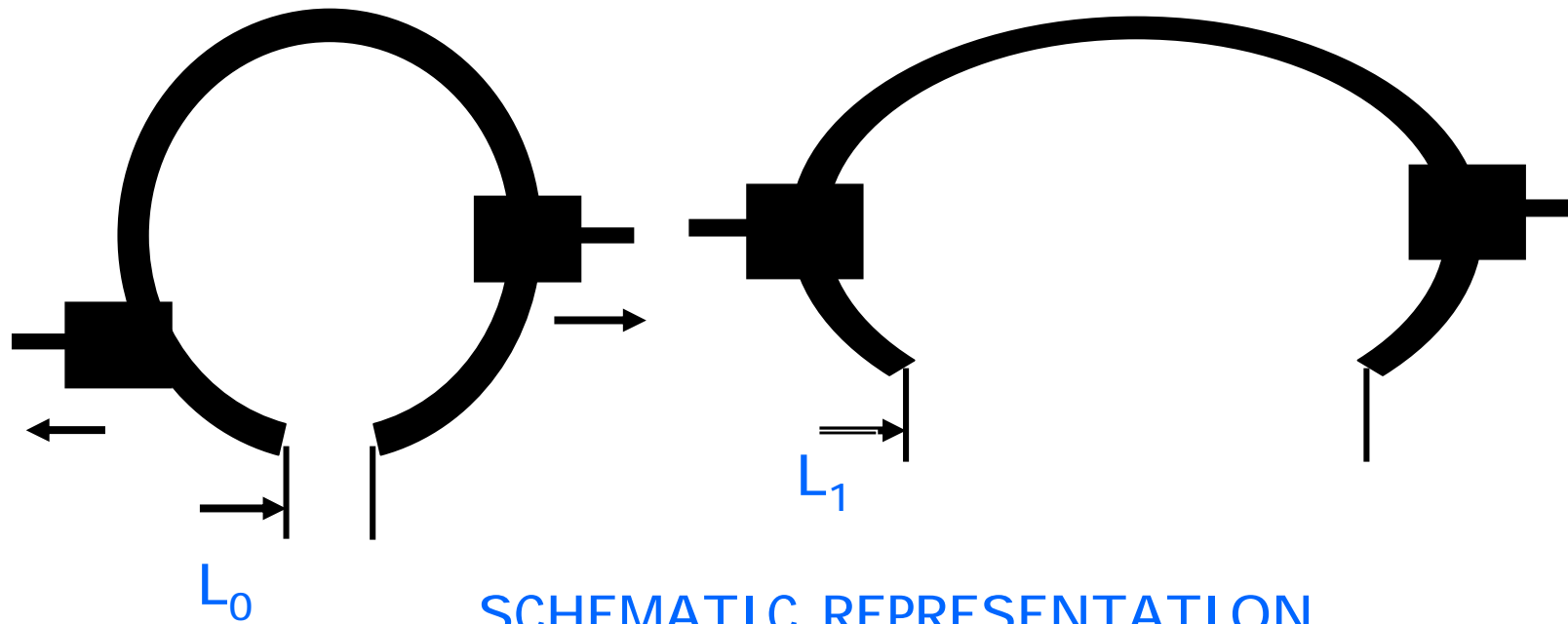


# BOND STRENGTH EVALUATION BY EXFOLIATION TEST

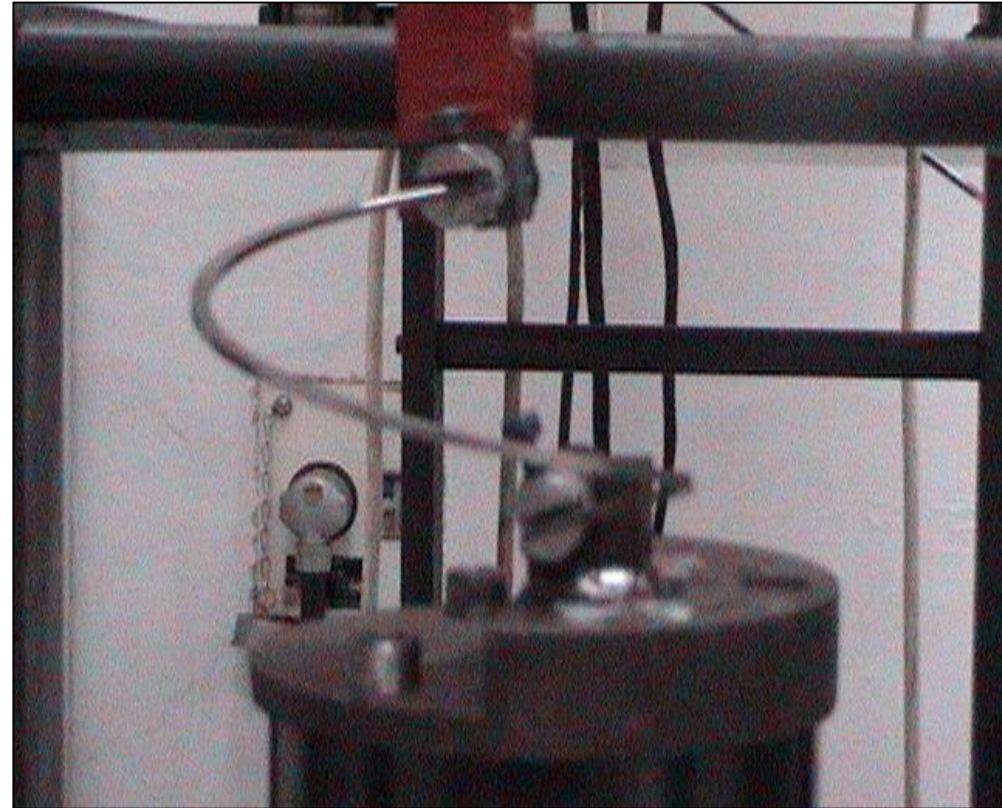


$$L_1 - L_0 \propto C (D - 2T) \quad (\propto 30 \text{MPa})$$

$C = \text{Constant}$

**But exfoliation test is not a completely reliable method for checking bond strength. Hence twist fatigue test was developed**

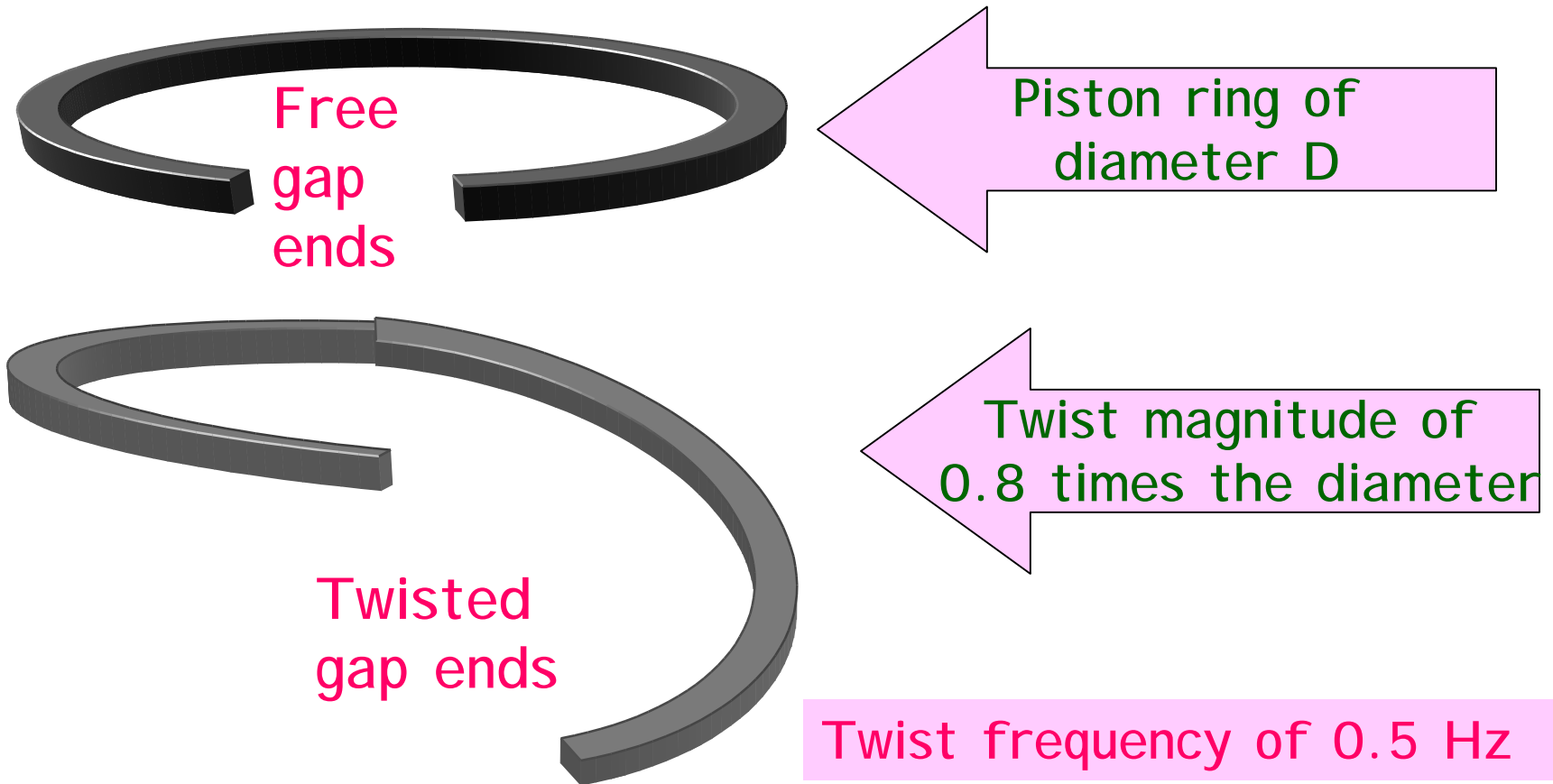
# TWIST FATIGUE TEST



The free gap ends are clamped and one gap end will be pulled to the constant magnitude at the fixed frequency.

Since exfoliation test is not adequate to decide on bond strength, the twist fatigue test has been developed.

## TWIST FATIGUE TEST



Evaluation method : Till Mo chip / peel